

Havingsten fra Glendalough



Self-building Viking ship A/S TALL SHIP MODELS NORWAY



Havhingsten fra Glendalough ("The Sea Stallion from Glendalough" or just "Sea Stallion") is a reconstruction of *Skuldelev 2*, one of the Skuldelev ships and the second-largest Viking longship ever to be found. The original vessel was built in the vicinity of Dublin around 1042, using oak from Glendalough in County Wicklow, Ireland, hence the ship's name. The reconstruction was built in Denmark at the shipyard of the Viking Ship Museum in Roskilde between 2000 and 2004 and is used for historical research purposes.

Research trip to Dublin 2007

A return voyage to Dublin took place over the summer of 2007. The ship left Roskilde Harbour on 1 July and arrived in Dublin on 14 August. She was put on display in the Collins Barracks, the Decorative Arts and History building of the National Museum of Ireland, from 17 August 2007 until 29 May 2008. She was then moved to the Grand Canal Dock to be prepared for the journey back to Roskilde on 29 June 2008, and shortly afterwards the National Bank of Denmark issued a 20-kroner commemorative coin in celebration of the event (https://en.wikipedia.org/wiki/Havhingsten_fra_Glendalough).

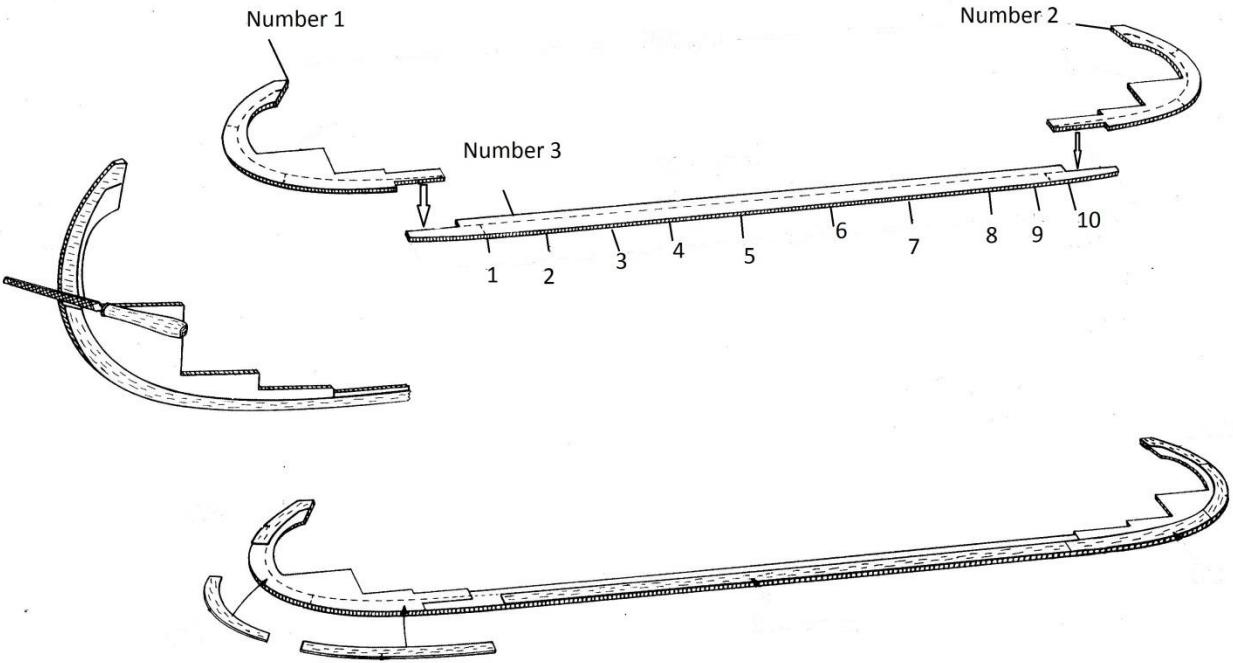
Name: Havhingsten fra Glendalough		General characteristics	
Owner:	Viking Ship Museum	Type:	Longship
Launched:	2004	Length:	100 ft (30 m)
Homeport:	Roskilde	Propulsion:	Oars & sail
Status:	On display	Sail plan:	144 sq yd (120 m ²) square sail
		Crew:	65

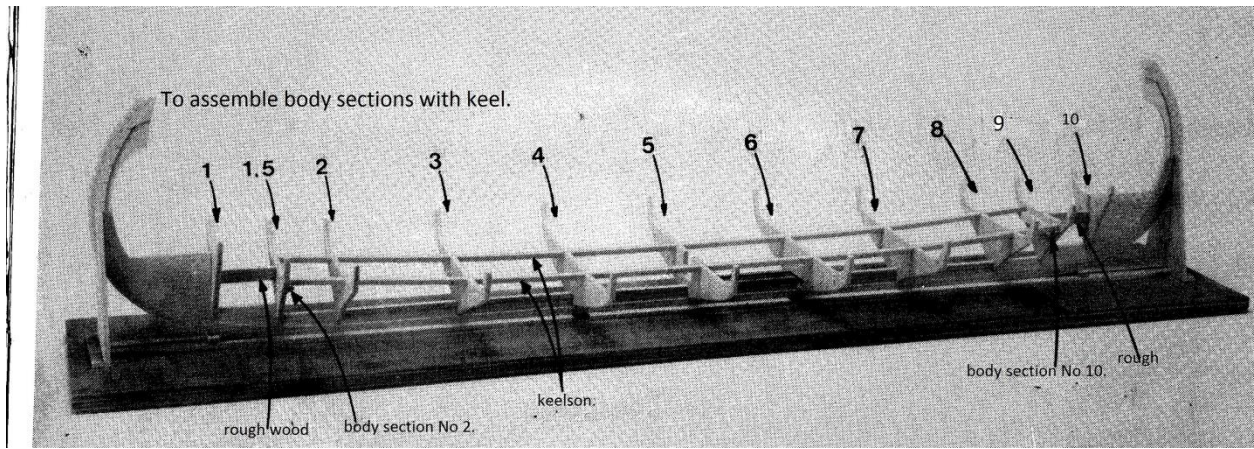


This pictures show you all details which you use to assemble your ship model.

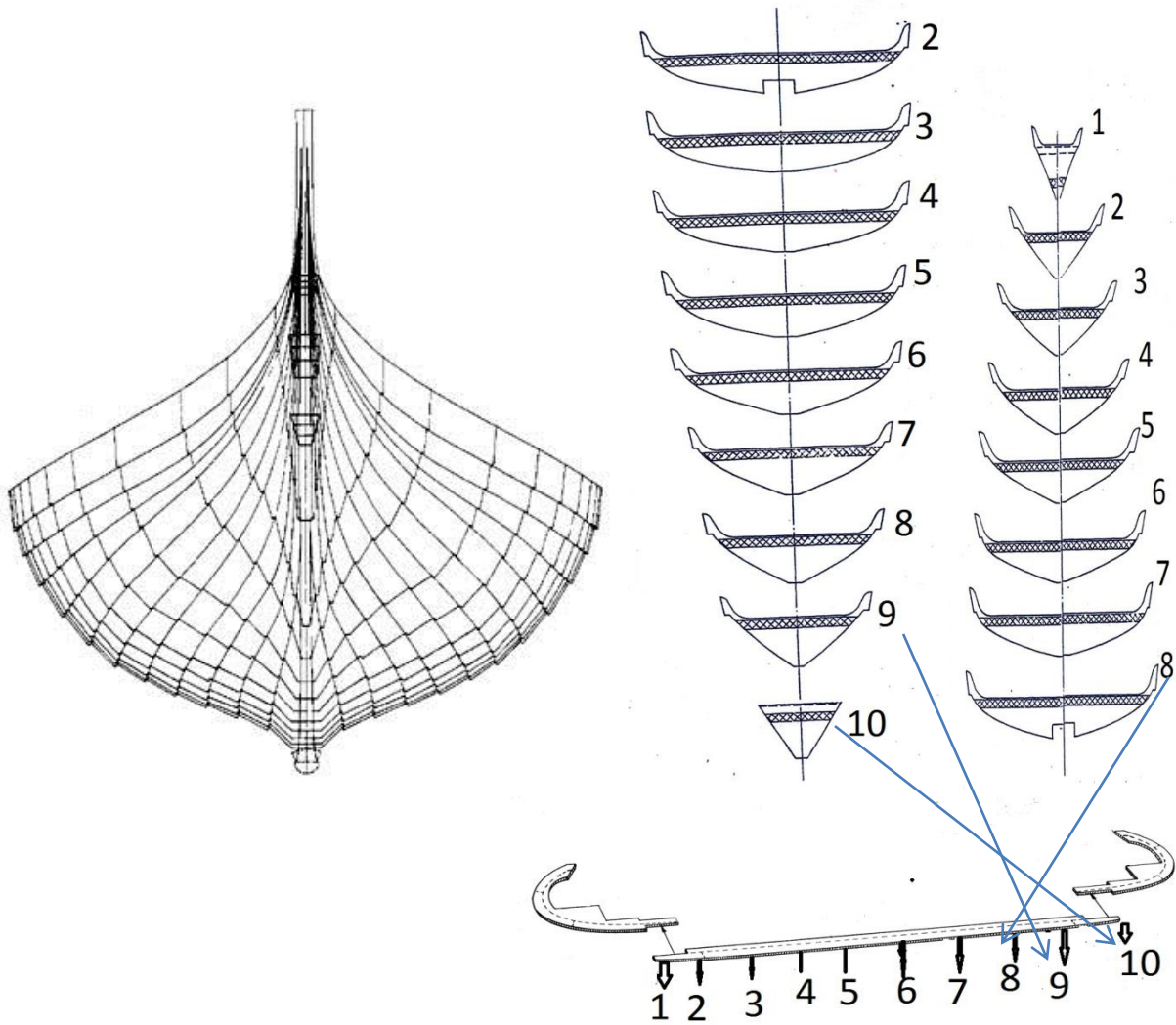


STEP 1: Installing the number 1, 2, 3 together (you use super glue to stick these parts together)

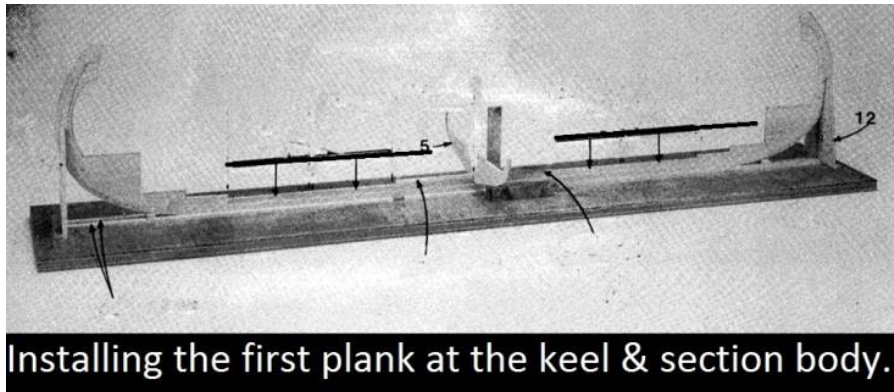




Body Section



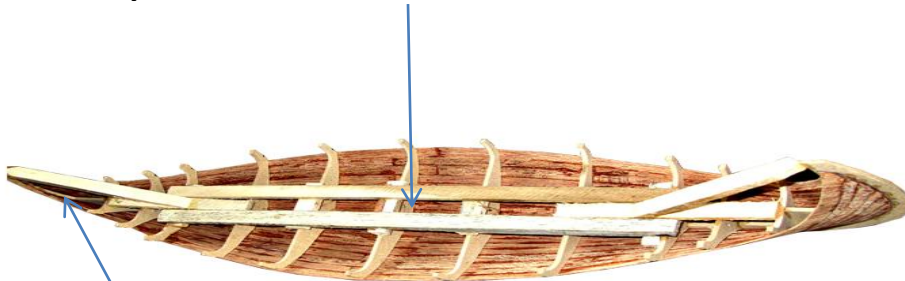
STEP 2: Installing the first plank at the keel and section body



Step 3: Installing planks from bottom to top at both sides. There are 10 buttocks that number 14 & 22 at both sides. Starting to assemble buttock No. 14 at the keel, then No. 15, continue to assemble No. 22 at both sides.

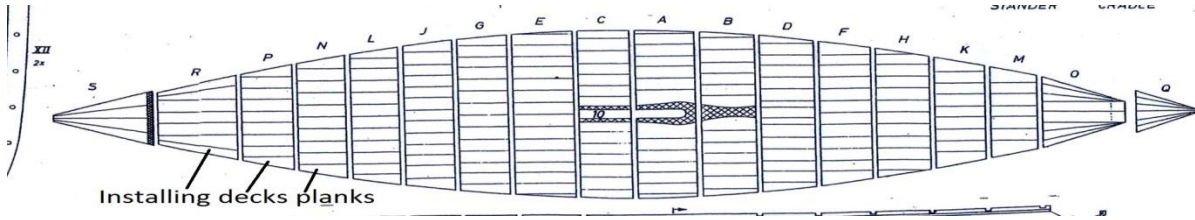


Step 4: To assemble keelson from fore to back between 11 body sections.

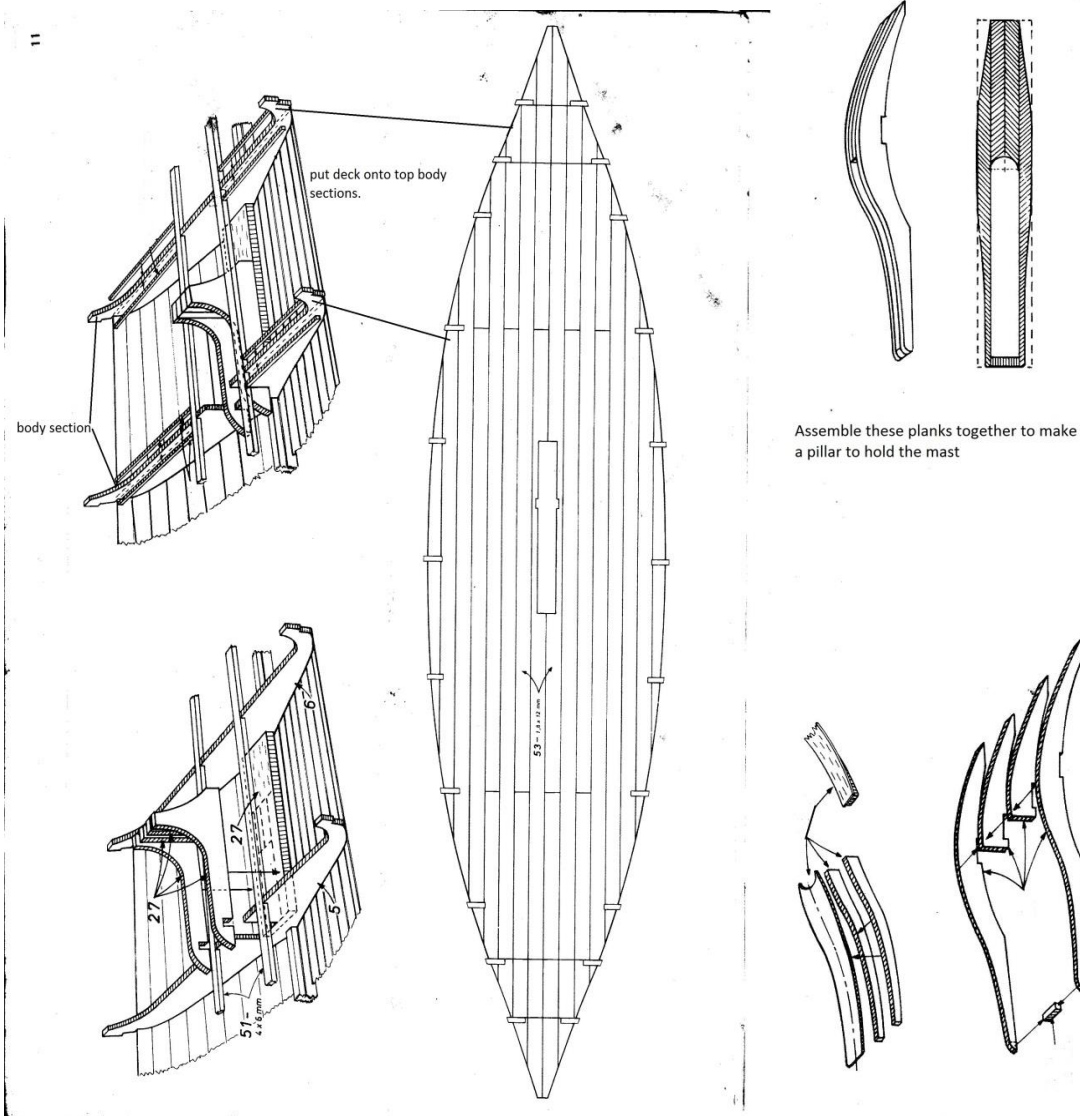


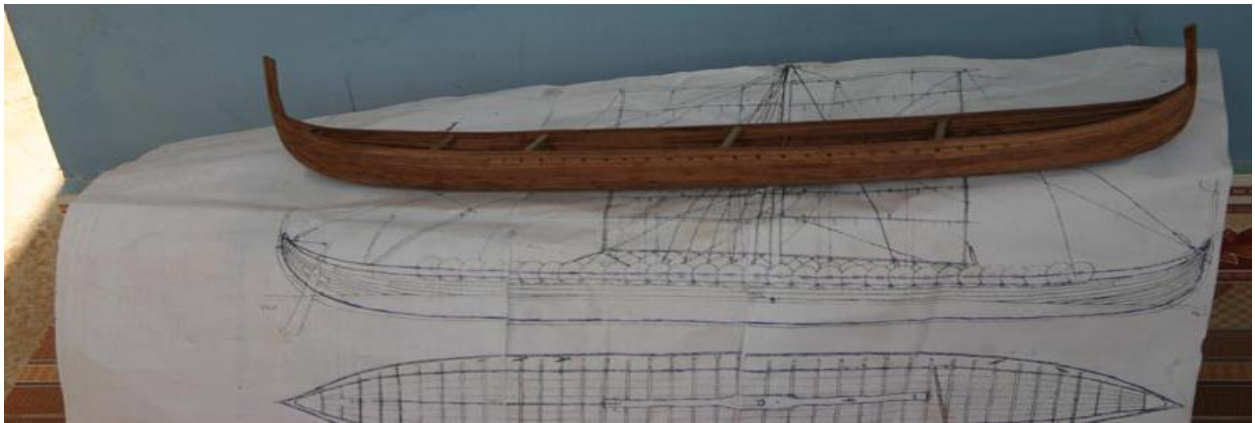
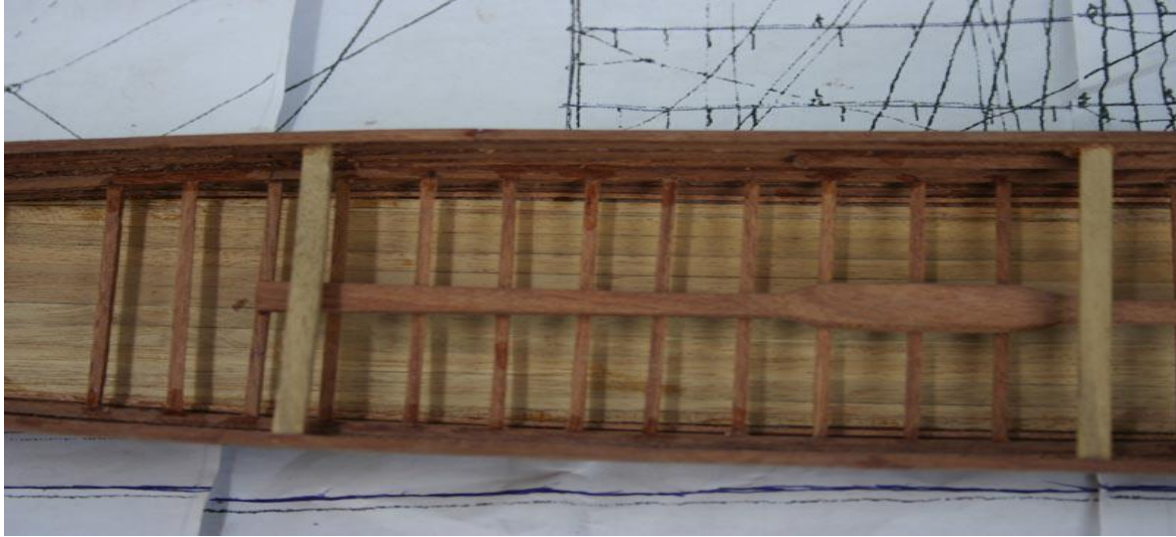
Step 5: Always place rough wood supports between frames for extra strength.

Step 6: Making deck

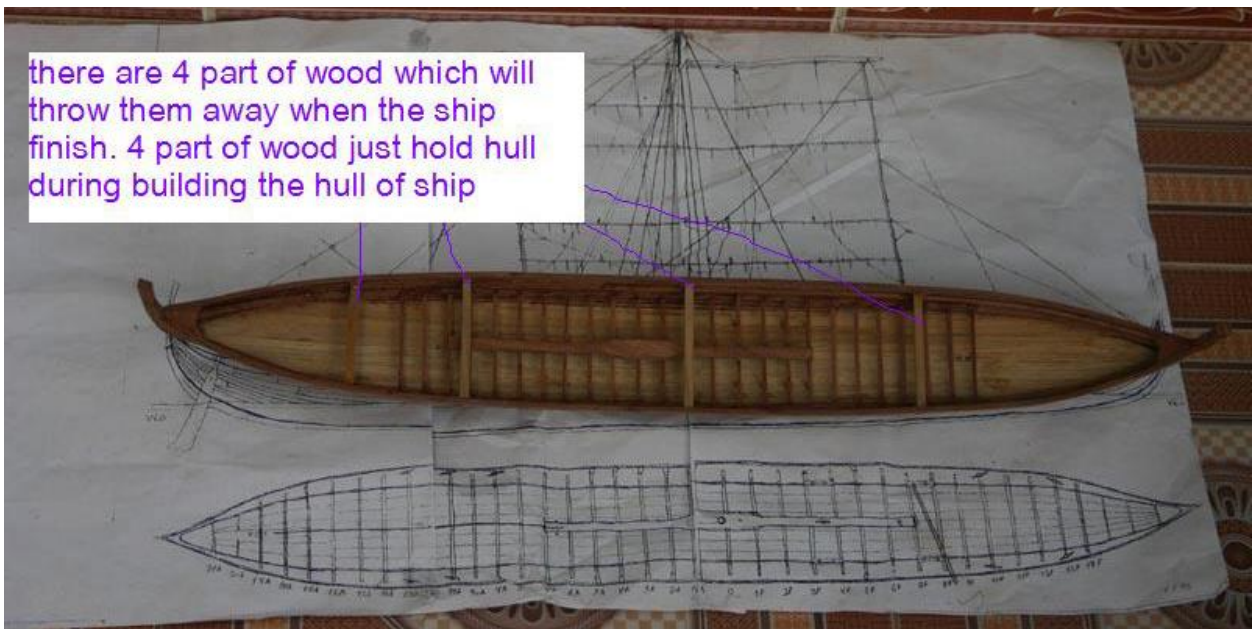


Step 7: Put deck above body section and make a pillar to hold mast.



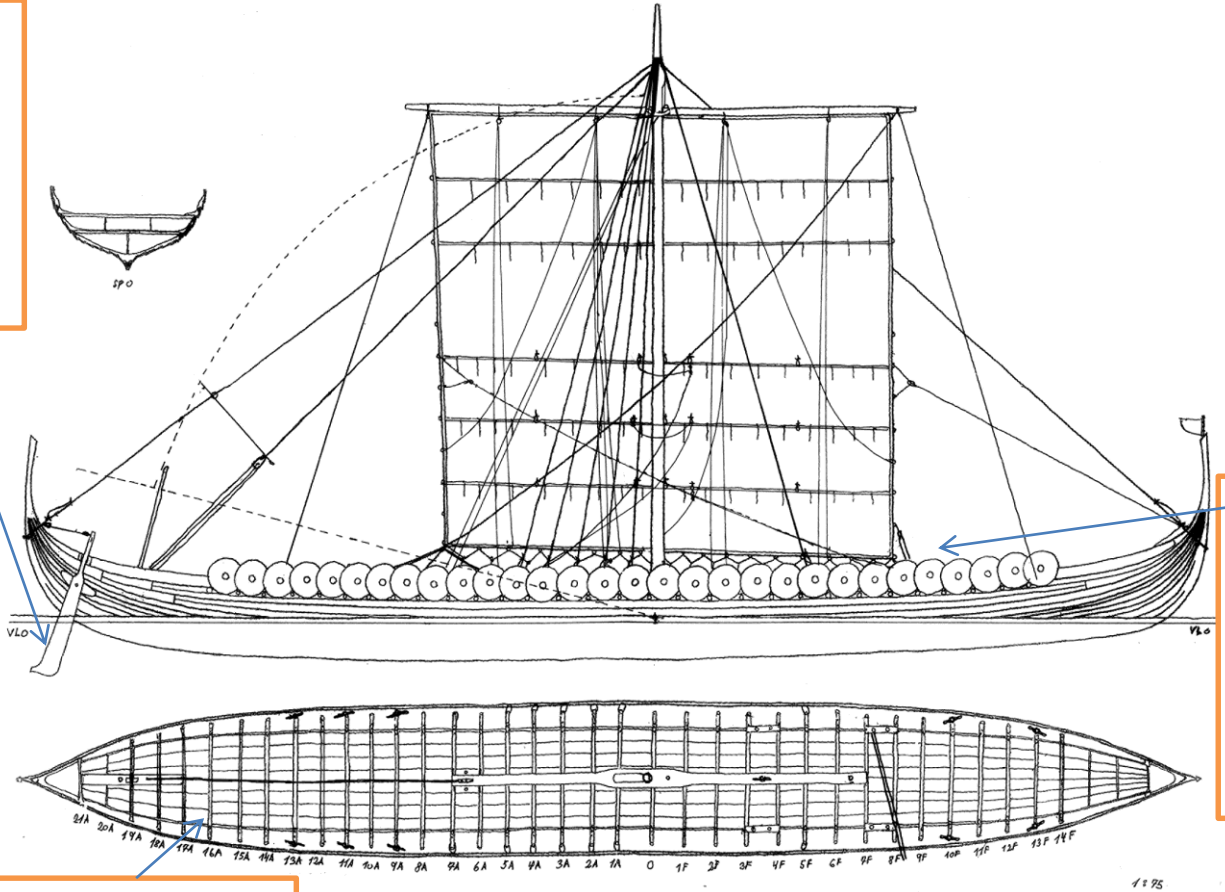


there are 4 part of wood which will throw them away when the ship finish. 4 part of wood just hold hull during building the hull of ship



Step 9:

Put a rudder on hull



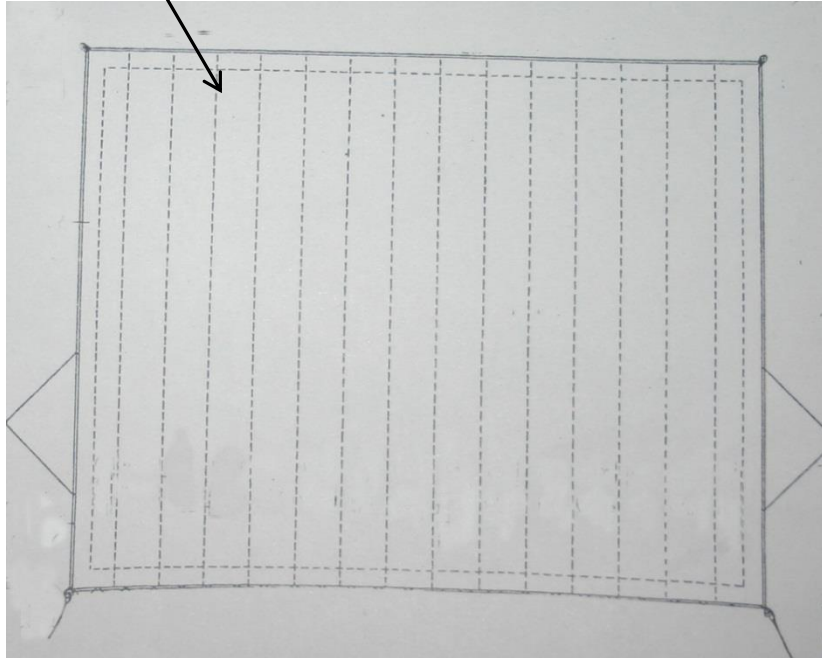
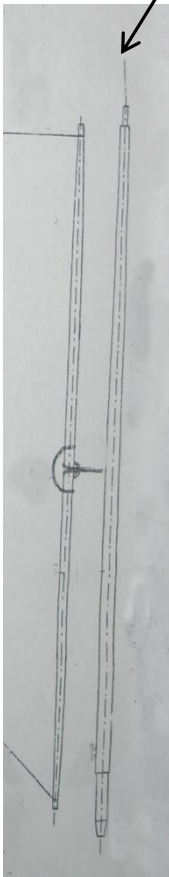
Step 8:
Assemble shields both sides & put a long plank

Step 10: Put all cleats (futtocks) on the deck

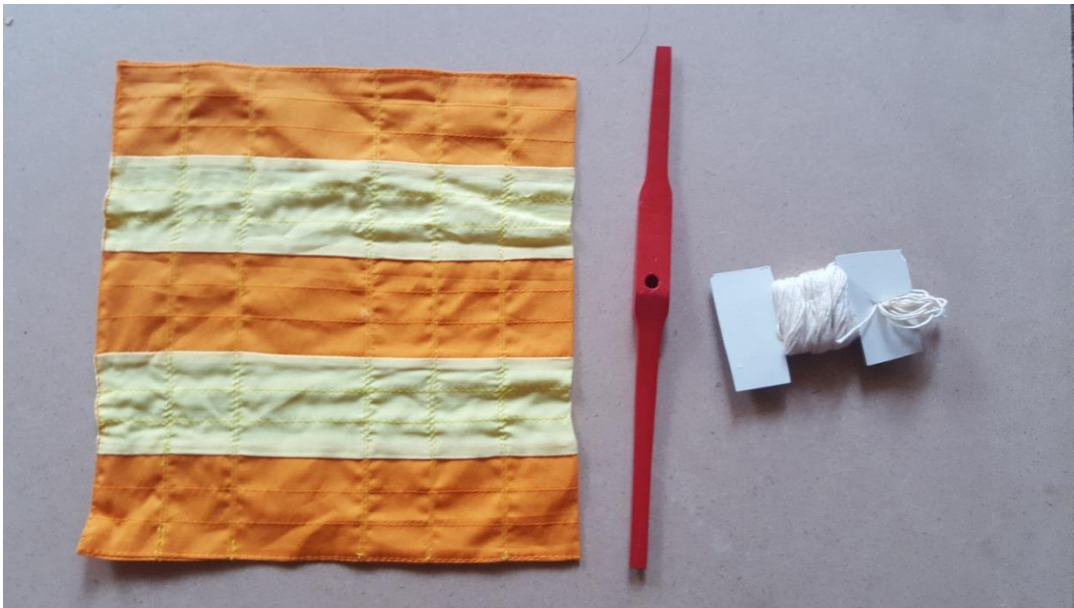
Step 11: Set up mast & rigging

- Sewing some lines on the sail by thread or you make a fine pencil lines are great.

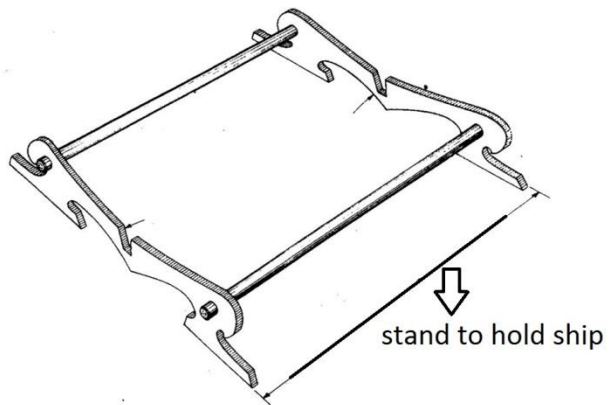
This is mast & sail



- Use rope to fasten sail with the block on the yard and add rope lines to yard.



Step 12: Making a stand to hold ship.



Step 13: you paint your ship model like a real one, If you want .
The ship model is finished.



- If you want to have dark brown ship model, you use varnish or chromite dark brown to paint the hull & deck, after that you shine thin cover furniture oil. Like this picture.



Thank you very much for buying our products!

